



# St. Ives gold mine slashes maintenance costs with FerroCer® Impact wear panels

St. Ives extended the service cycle of their primary crusher significantly, saving downtime and maintenance costs. FerroCer® Impact wear panels have lasted more than four times longer than their rubber wear panels.

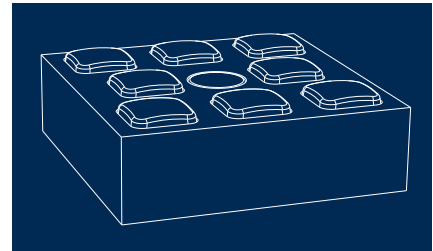
**Initially, I was sceptical that these kinds of liners could withstand the heavy impact from rocks of this size. Once we learned about FerroCer's design, we became convinced"**

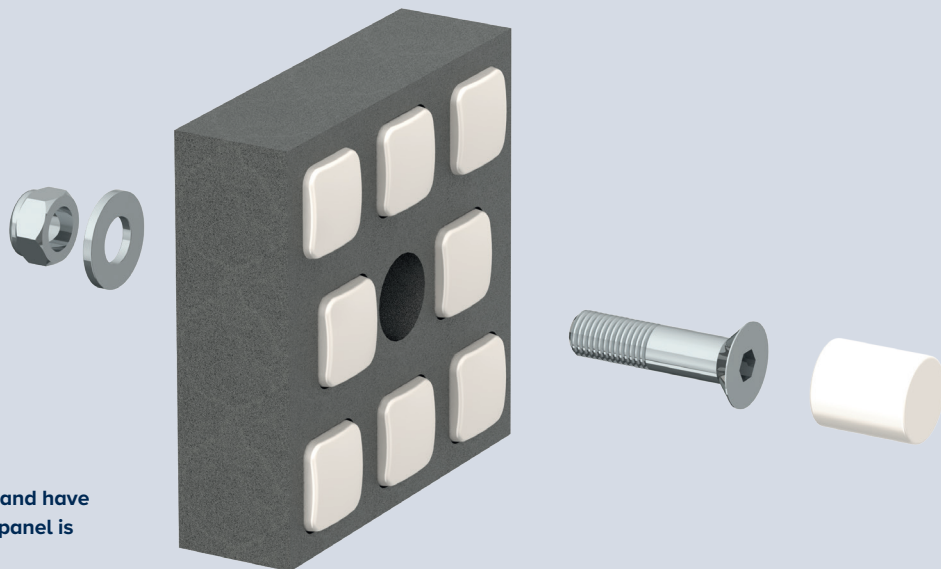
**Gary Ellis**  
Maintenance Supervisor  
at St. Ives gold mine in Australia

With weak mineral prices holding steady, mines all over the world are forced to focus on operational efficiency and productivity. Many successful mines are zeroing in on maintenance and downtime. St. Ives gold mine, one of Australia's most important mines, has reduced shutdown intervals by installing FerroCer® Impact wear panels in their feed chute below their primary crusher.

## Synchronising shutdowns

The maintenance team at St. Ives was having issues with their discharge chutes. They were using heavy-duty rubber impact bars that typically needed to be replaced every 6 to 8 weeks. This was setting back the mine's shutdown cycle, which was set at every 12 weeks.





**FerroCer Impact panels weigh only 5 kilo and have a compact and easy-to-handle size. Each panel is attached using a single countersunk bolt.**

Maintenance Supervisor Gary Ellis says, “Our rubber liners were simply not able to handle the impact of -400 mm rocks dropping from a height of 2 meters. We needed something that would last 12 weeks or longer to maintain an uninterrupted production flow.”

### A tough-as-nails design

The maintenance team surveyed various rubber and metallic wear solutions. Ultimately they chose FerroCer Impact ceramic wear panels. FerroCer’s ceramic and metal matrix is tough. It can withstand intense pressure and the massive impact of falling ore. “Initially, I was sceptical that these kinds of liners could withstand the heavy impact from rocks of this size. Once we learned about FerroCer’s design, we became convinced”, says Gary.

### In action for more than 34 weeks

FerroCer has lasted more than four times longer than the old rubber wear panels. That is taking St. Ives a long way towards reducing maintenance costs and achieving an uninterrupted production flow. Gary concludes, “I have to say, we’re pretty amazed.”

To see FerroCer Impact wear panels action, go to our FLSmith YouTube channel: [FerroCer Impact Wear Panels](#).



**FerroCer Impact wear panels installed in the chute’s drop zone which is subjected to the greatest wear from the falling ore**

**After 16 weeks of operation, wear measurement revealed only 10-13% wear on the ceramic inserts and no visible cracks or chipping**

**FLSmith A/S**  
2500 Valby  
Denmark  
Tel. +45 36 18 10 00  
info@flsmith.com

**FLSmith Inc**  
Salt Lake City Operations  
Midvale,  
UT 84047-5559 USA  
Tel. +1 801 871 7000  
Info.sl.c@flsmith.com

[www.flsmith.com](http://www.flsmith.com)

Copyright © 2023 FLSmith A/S. All Rights Reserved. FLSmith and FLS are (registered) trademarks of FLSmith A/S. This study makes no offers, representations or warranties of any kind (express or implied), and information and data contained in this study are for general reference only and may change at any time. FLSmith does not guarantee or make any representation regarding the use or the results of the information or the data provided in the study in terms of its correctness, accuracy, reliability or otherwise, and shall not be liable for any loss or damage of any kind incurred as a result of the use of the information or data provided.